

The formula for **Success**

connecting people

The ICC, Birmingham

23 - 25 November 2014

Experiences of implementing
SAP BW on HANA at Boots

USER GROUP CONFERENCE

Experiences of implementing SAP BW on HANA at Boots UK



www.sapusers.org/conference



@sapuserconf

Phil Creek and Jamie Flaxman
SAP centre of expertise
Boots UK

Experiences of implementing SAP BW on HANA at Boots UK

24 November 2014



Who we are...



Phil Creek

Manager Business
Analysis



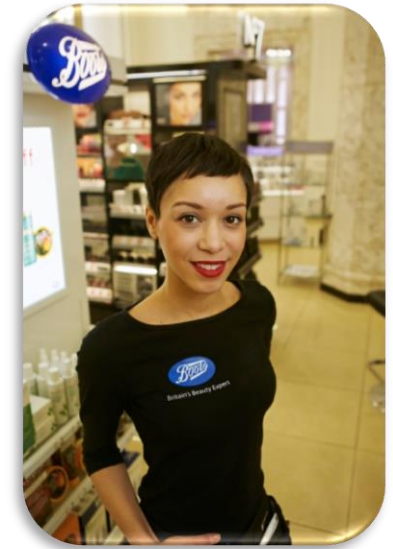
Jamie Flaxman

SAP Solution
Architect MI &
Loyalty



Alliance Boots

- Presence in more than **27*** countries
- Over **120,000*** employees
- **4,600*** health and beauty retail stores – of which just under **4,450*** have a pharmacy
- Operating more than **370*** pharmaceutical wholesale distribution centres
- Dispensing over **300* million** items each year
- In 2012, Alliance Boots announced that it had entered into a strategic partnership with **Walgreen Co.**, the largest drugstore chain in the US
- In August 2014, Alliance Boots and Walgreens communicated that they plan to merge in Q1 of the calendar year 2015. The new company will be named Walgreens Boots Alliance



Walgreens



* Figures are approximations as at 31 March 2014, with the addition of Farmacias Ahumada data at the date of its acquisition on 11 August 2014, and include associates and joint ventures.

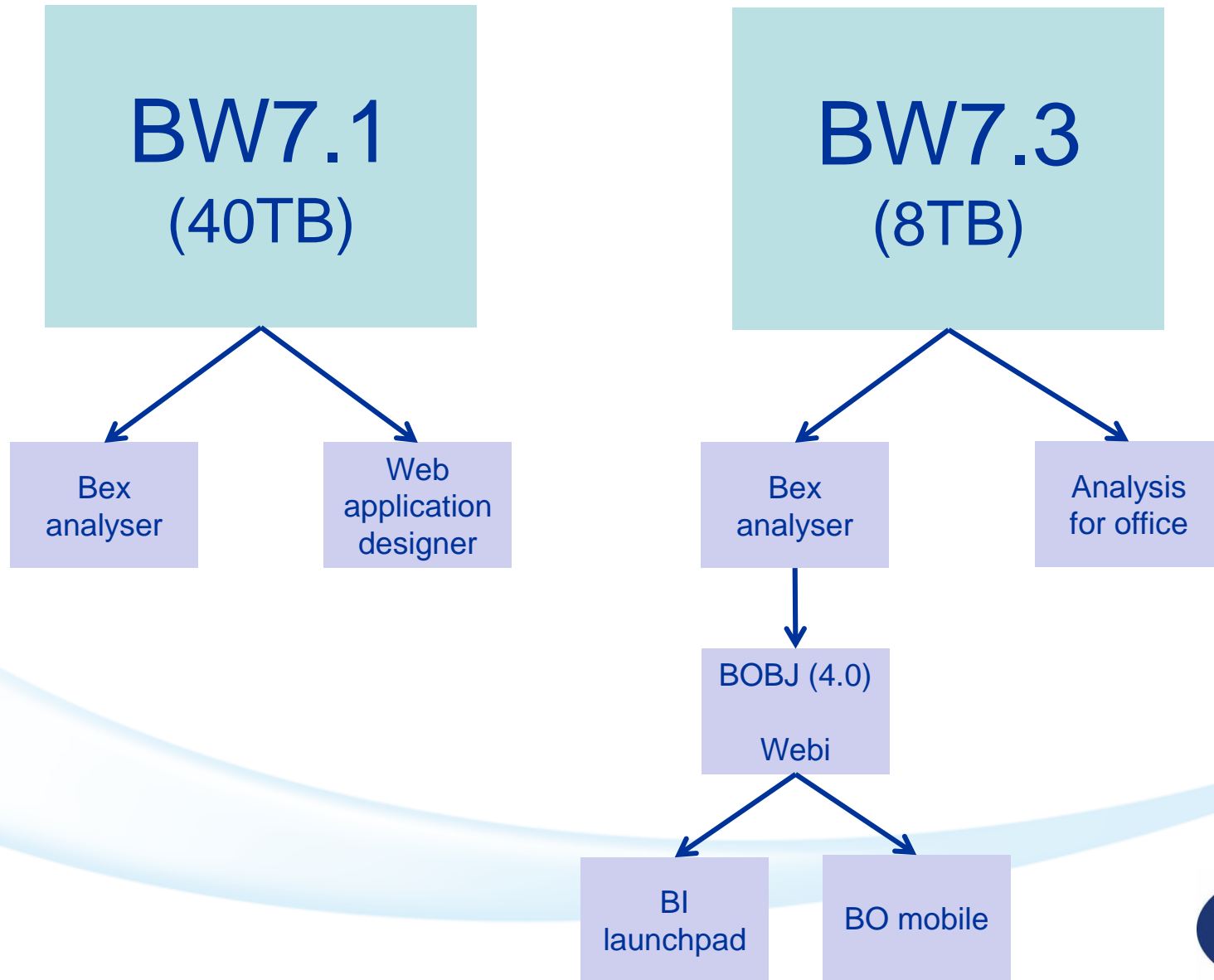
Health & Beauty – UK

- **2,487*** stores, **600*** Boots Opticians practices, **430*** Boots Hearingcare locations
- **16*** doctors' surgeries located in store
- **90%*** of population within a 10 minute drive of a Boots store
- Growing omni-channel offer, boots.com revenue increased by **30%***
- **c.60,000*** Boots UK colleagues with around **6,500*** pharmacists
- **17.8m*** Boots Advantage Card members
- **3.5m*** visits a month to BootsWebMD.com



* Figures are approximations as at 31 March 2014

SAP BW at Boots UK



Drivers of change

Reduce run costs

Add system capacity

Remove batch limitations

Faster, cheaper change

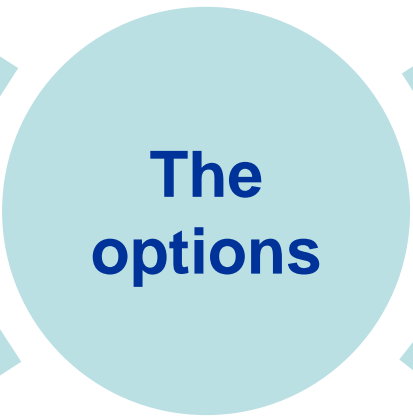
Real-time reporting



Reallocate
failover blades

Purchase
second hand
blades

Remove data
reduce data
growth



**The
options**

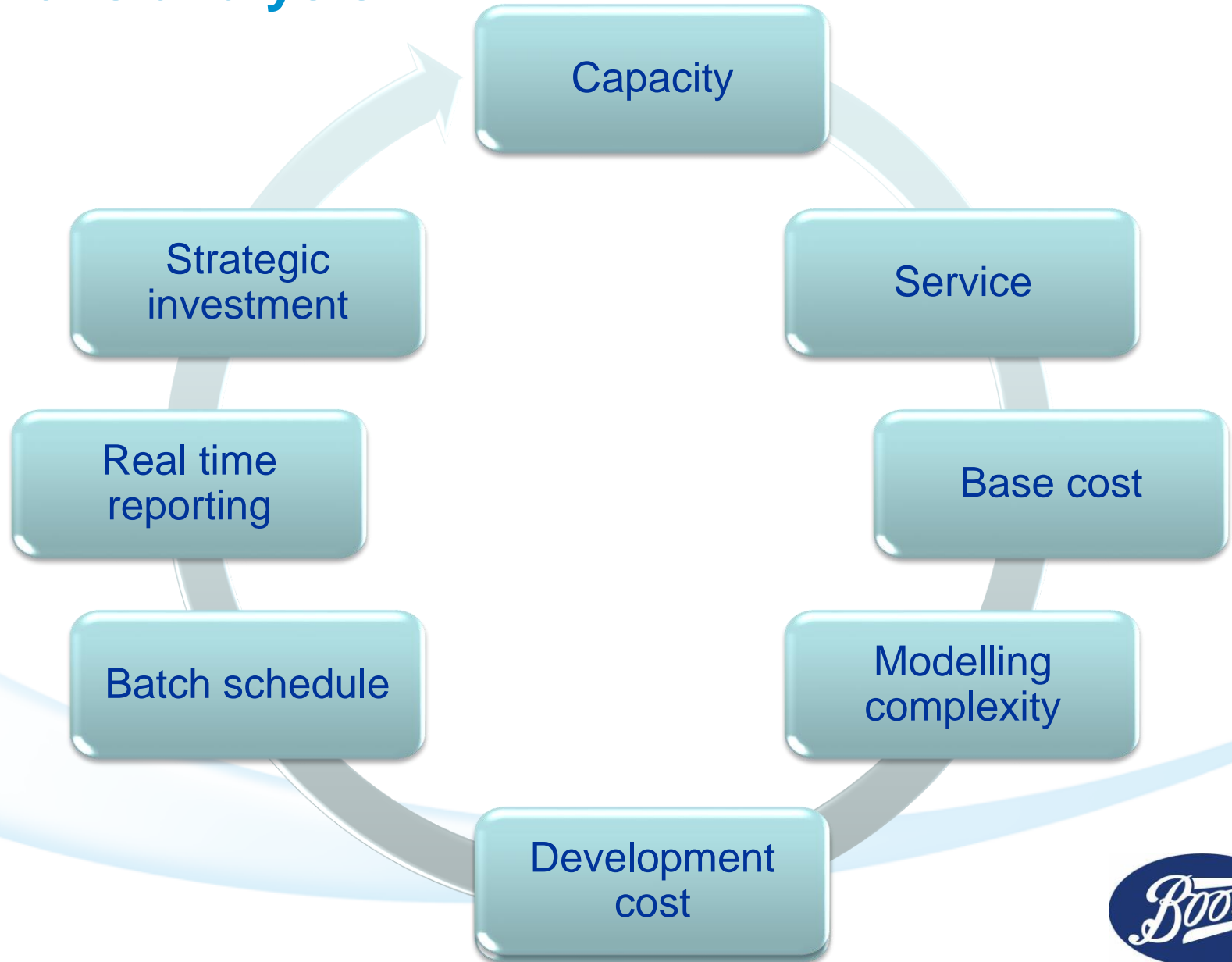
Invest in more
BWA capacity

Invest in HANA
technology with
NLS

Invest in HANA
technology



Options analysis

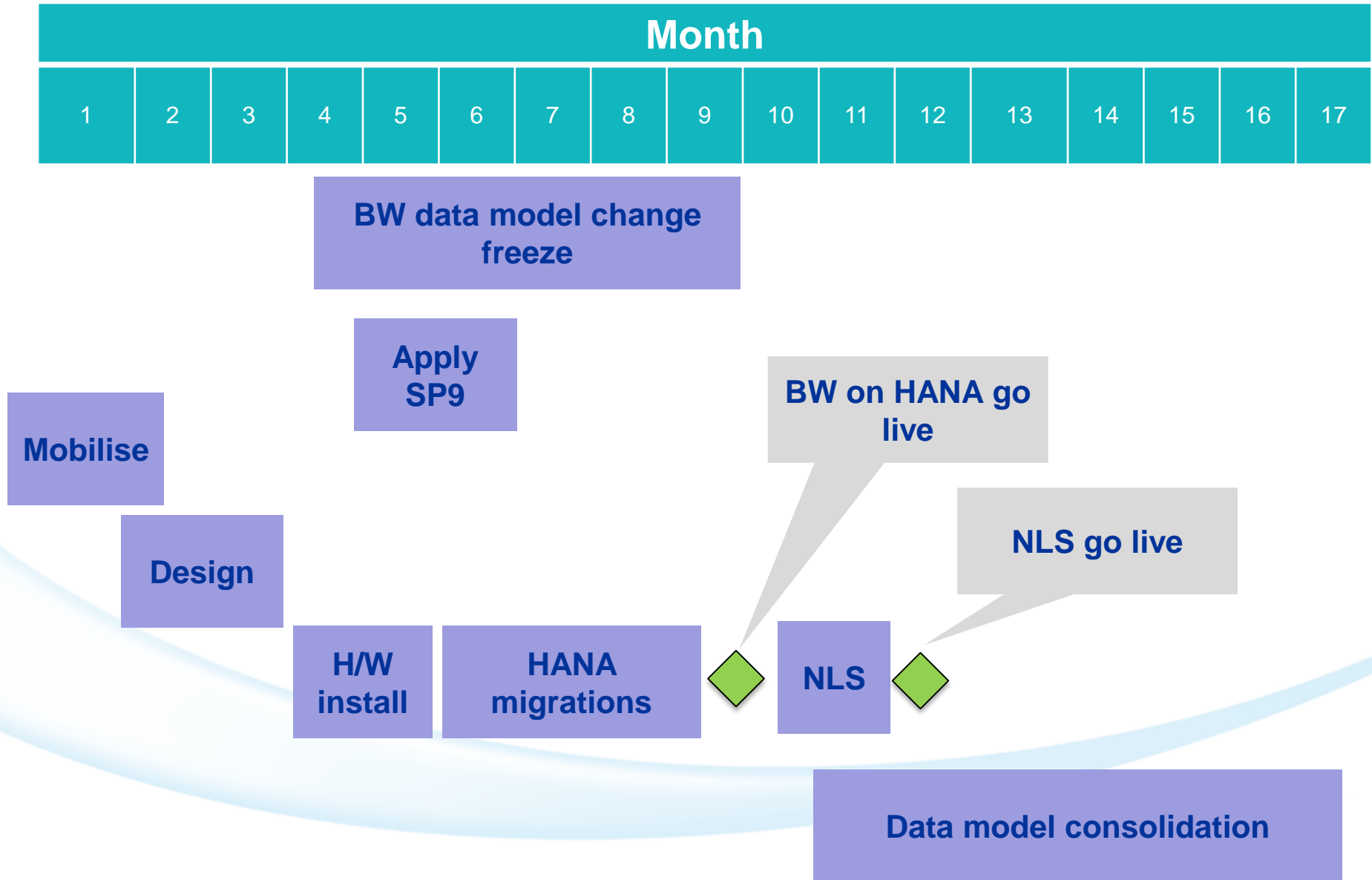


Options analysis

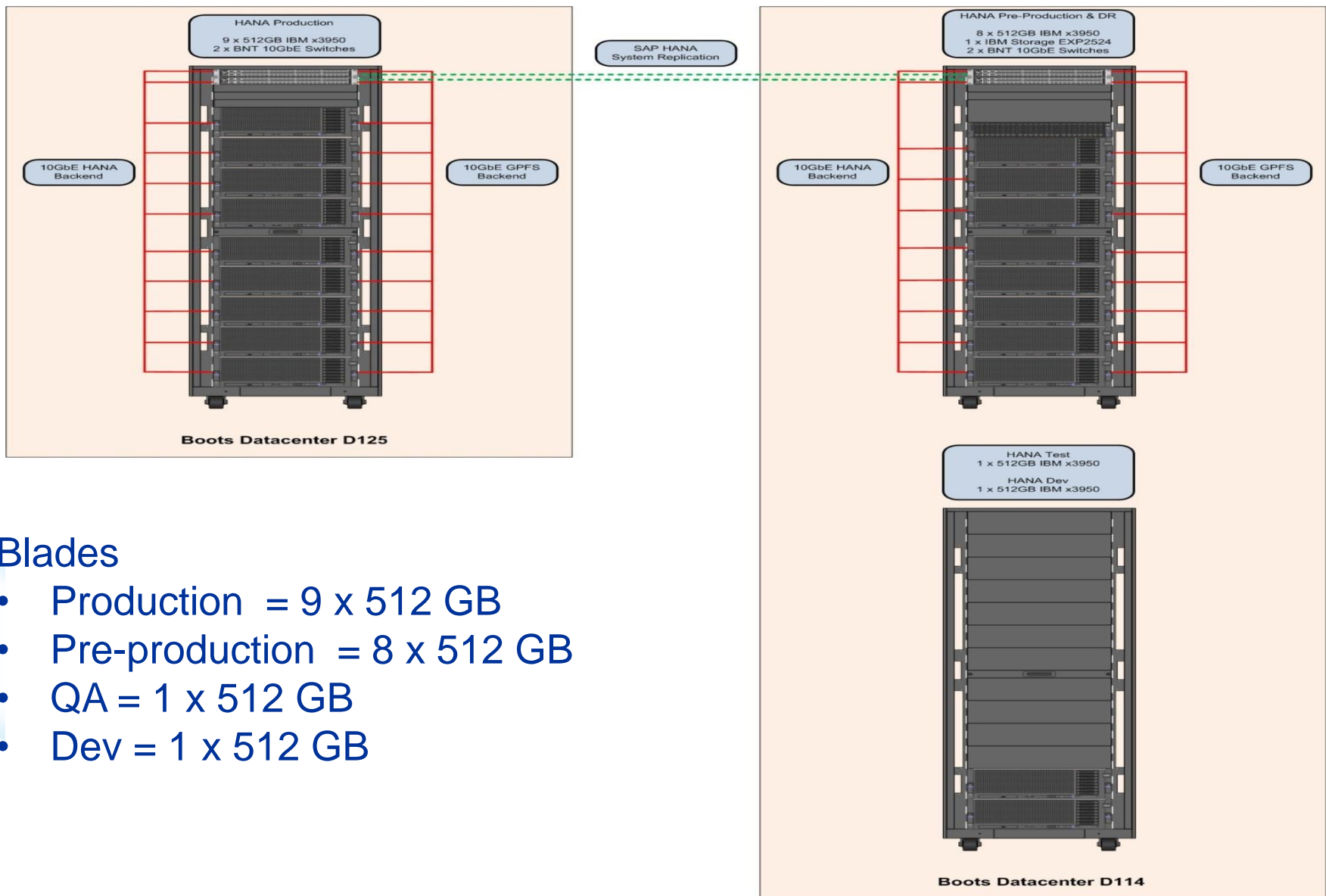
	1. Remove data from BWA and throttle back data growth	2. Reallocate the failover cluster to live	3. Purchase additional second hand blades	4. Invest in more BWA capacity	5. Invest in Hana technology	6. Invest in Hana technology with Sybase Overflow database
Satisfies projected capacity growth	X No change	√ Should meet short-term capacity targets. Not scalable for future growth	√ Should meet short-term capacity targets. Not scalable for future growth.	√ Should meet short-term capacity targets. Not scalable.	√ Meets the projected two years of future data growth and will also be scalable to meet the demands of future projects	√ Meets the projected two years of future data growth and will also be scalable to meet the demands of future projects using cheaper storage.
Impact on system SLA	X No change	X ↓ failover removed	X ↓ SLA as 2 nd hand blades not supported	X No change	√ Faster recovery of data	√ Faster recovery of data
Impact on base cost	X No change	X ↑ Higher licensing	X ↑ Higher licensing	X ↑ Higher licensing	√ Net saving ↑ Higher licensing ↓ Support Costs	√ Net saving ↑ Higher licensing ↓ Support Costs
Reduce system modelling complexity	X No change	X No change	X No change	X No change	√ Complexity reduced	√ Complexity reduced
Faster, cheaper delivery of change	X No change	X No change	X No change	X No change	√ Simplified architecture, less data objects, reducing design, build and testing costs and timescales.	√ Simplified architecture, less data objects, reducing design, build and testing costs and timescales.
Batch schedule limitations reduced	X No change	X No change	X No change	X No change	√ Enhanced loading capability speeds up batch processing, provides opportunity to move to a more real-time update process reducing the dependency on overnight batch.	√ Enhanced loading capability speeds up batch processing, provides opportunity to move to a more real-time update process reducing the dependency on overnight batch.
Solution set-up to support real-time reporting	X No change	X No change	X No change	X No change	√ Provides a stable robust platform for real-time reporting.	√ Provides a stable robust platform for real-time reporting.
Strategic investment	X BWA mainstream support ends Dec 2015.	X BWA mainstream support ends Dec 2015.	X BWA mainstream support ends Dec 2015.	X Not aligned with SAP's EDW strategy.	√ Aligns SAP's EDW Strategy. Option to add Sybase NLS could be delivered later as additional investment.	√ Aligns SAP's EDW Strategy. NLS can be used rather than holding all data in HANA appliance.

Option chosen

The plan



Infrastructure



Blades

- Production = 9 x 512 GB
- Pre-production = 8 x 512 GB
- QA = 1 x 512 GB
- Dev = 1 x 512 GB

What actually happened

Mobilisation and pre-requisites

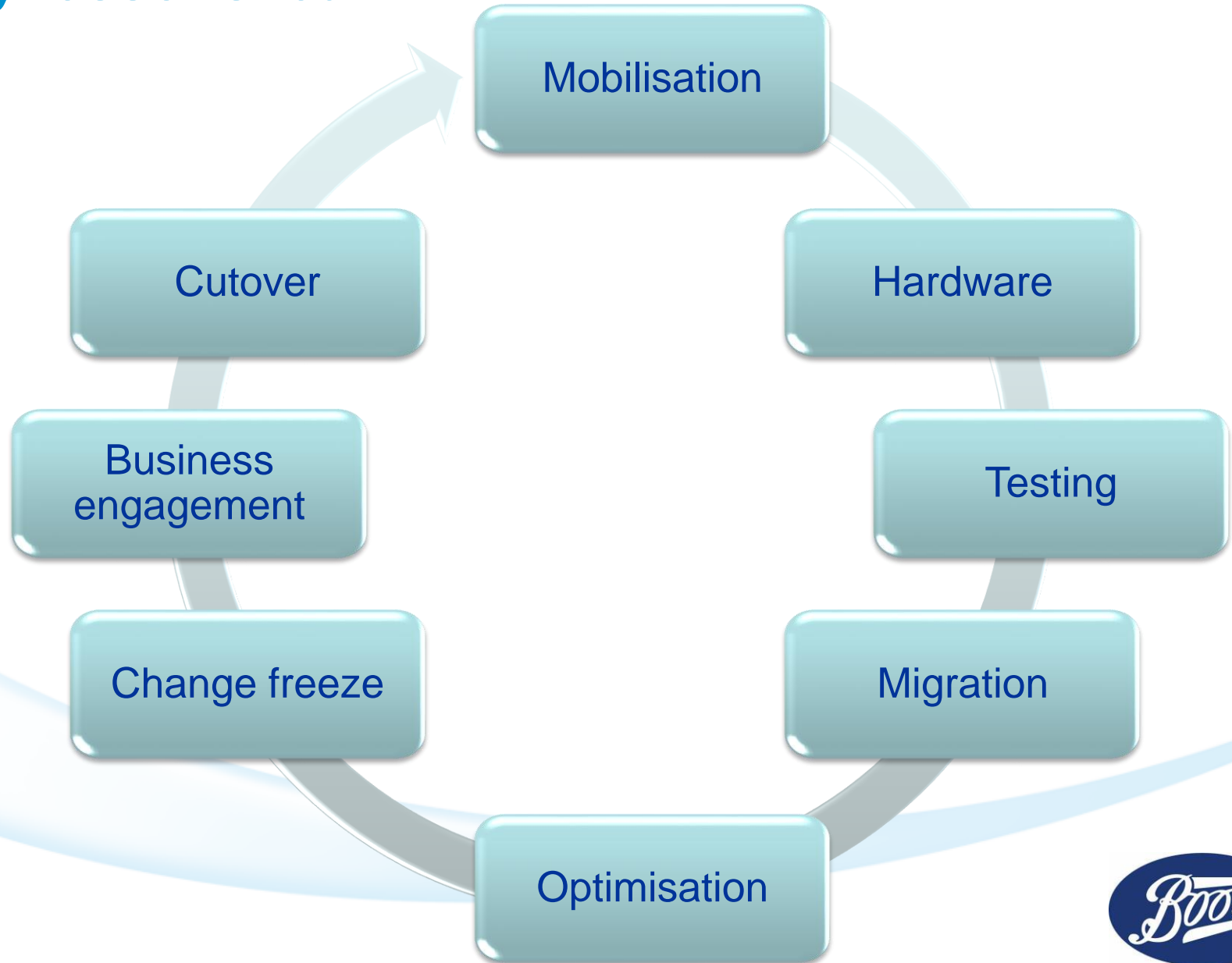
Hardware and database migration

Go-live

Results



Key lessons learnt



The future

Data model consolidation

Near line storage

Real-time reporting

Further exploitation



Thank you for listening

Do you have any questions?



Contact details

Phil Creek

E-mail: phil.creek@boots.co.uk

Tel: 0115 968 7282

Jamie Flaxman

E-mail: jamie.flaxman@boots.co.uk

Tel: 0115 968 7028

