



proceed

Proceed RightSizing SAP Assessment

PROCEED RIGHTSIZING SAP ASSESSMENT

Overview and instructions

Contents

SAP data archiving	3
How will a SAP data archiving assessment help?	4
Your SAP data archiving assessment	5
Data assessment instructions for ECC6 on Oracle or DB02	6
Data assessment instructions for systems at a lower level than ECC6 on Oracle or DB02	11
Data assessment instructions for all systems on SQL server	15
Analysis of the COEP table	18
System information (required in all instances)	20
Contact us	21

SAP DATA ARCHIVING

SAP provides industry-leading software solutions to thousands of companies worldwide.

SAP's highly integrated, collaborative solutions generate large quantities of documents, reports and transactional data every day. Without proper management, this large volume of data can offset the key operational and competitive business advantages that SAP offers.

Our complimentary SAP data archiving assessment can help you to identify opportunities to manage your SAP data more effectively.

Why consider SAP archiving?

If you have been running SAP ERP systems for several years, it is likely that your business is facing one or more of the following challenges:

- > Higher operating costs
- > Slower performance
- > Risk of non-compliance

SAP recommend removing data no longer needed for everyday business processes from the SAP database.

SAP archiving is the only method SAP supports to ensure application data is removed from the database consistently and securely.

How will a SAP data archiving assessment help?

At the beginning of a SAP archiving project you need to establish how much disk space is occupied by certain applications.

Our complimentary assessment will review your system to produce a report that outlines:

- > Your archiving requirements
- > A breakdown by module of what can be achieved
- > Guidelines for your archiving policy
- > Achievable database reduction

Our findings will be presented and discussed during an onsite workshop or webinar which covers:

- > An assessment of your data
- > Advice on your SAP archiving project plan
- > Applying SAP best practice, residence and retention times
- > Dependencies to other applications (DART, BI, print lists, document archiving)
- > Recommended next steps
- > Approximate costs based on the assessment

Our data assessment will enable you to:

- > Plan the next SAP archiving project steps
- > Accurately estimate a project budget and timescale
- > Improve your system performance
- > Optimise your storage requirements
- > Fulfil legal requirements through archiving
- > Implement best practice business and architectural advice
- > Accelerate and prioritise your SAP archiving project

Our data assessment also shows you how to eliminate problems caused by data growth which will:

- > Minimise upgrade downtime
- > Reduce restore timescales, lowering risk of lost revenue in the event of a data corruption
- > Improve interactive performance, raising end user efficiency
- > Raise performance and backup runs to ensure system availability
- > Lower and control hardware, storage and administration costs



Your SAP archiving assessment

Our SAP data assessment is quick, straightforward and non-invasive, using non-confidential data supplied by you.

To begin your data assessment, simply follow the attached instructions to:

- > Extract the data by running two standard SAP transactions and exporting the results into a spreadsheet
- > Send your spreadsheet to: dataassessment@proceedgroup.com
- > We will analyse your supplied data and produce a report showing you opportunities to reduce your database volumes

NB: The data assessment can be used for 4.6c, 4.7, ECC5 and ECC6 including CRM and SRM systems, but **not BI**.

If you encounter problems when following the extraction instructions please [contact us](#).

Data assessment instructions for ECC6 on Oracle or DB02

Access transaction DB02.

Select Space 'Segments' Detailed Analysis and double click.

The screenshot displays the SAP 'Space Overview' transaction for database 'QR0'. The interface includes a navigation tree on the left and a main content area with several data panels.

Space Overview

- DB Name: QR0
- DB Server: web0sap05
- DB Release: 11.2.0.1.0
- Started: 18.06.2010
- Time: 07:46:08

Database

Name	DEFAULT	Last analysis	21.06.2010 07:21:53
DB system	ORA	Filing degree	
Size	2,299,716 GB	Total size	2,116,411 GB
Free Space	64,723 GB	Total free space	62,234 GB
Used	97.4	Total used	90.4

Users

Total number	14
Maximum size	2,284,520,000 KB (SAPFET)
Maximum # segments	168,736 (SAPFET)

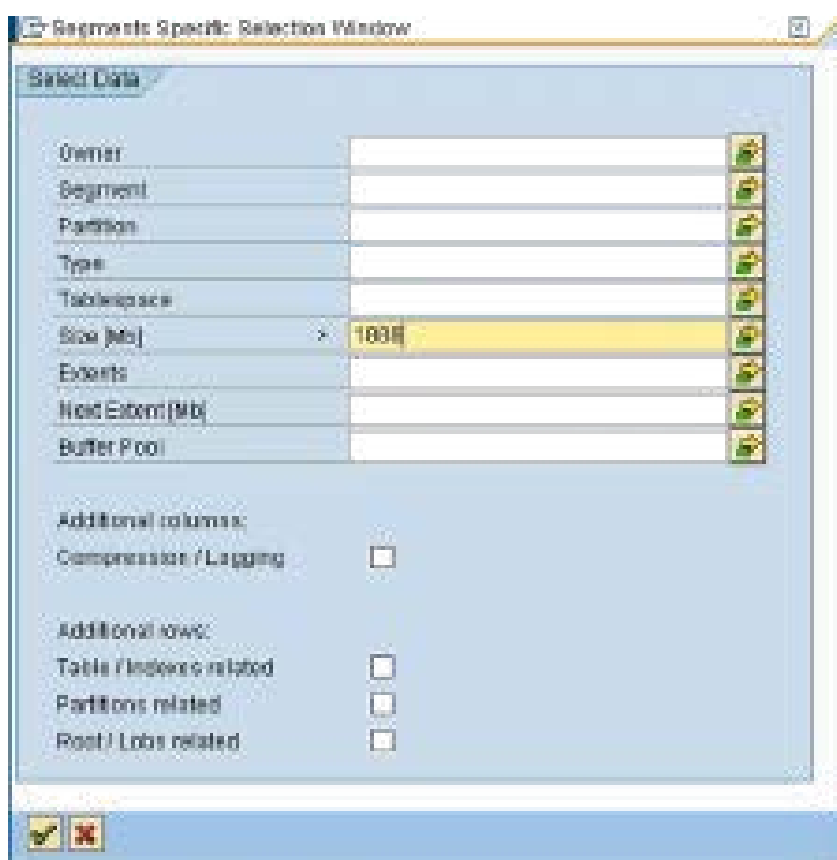
Tablespaces

Total number	7
Maximum size	2,795,000,000 KB (SAPFET)
Minimum free space	690,000 KB (SAPFET/USF)

Segments

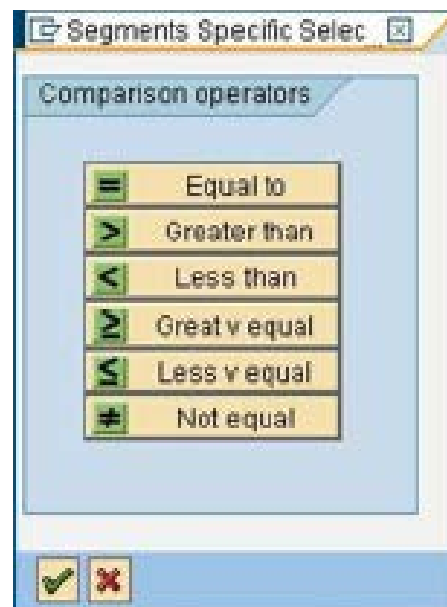
	Tables	Indexes	Others	Total
Number	78,243	81,287	5,680	175,413
Size (MB)	1,236,746.94	834,944.21	113,971.18	2,287,662.38
With ESO ext.	173	266	22	461
Compressed	87	85	0	172
No logging	65	1	18	84
Critical	3	0	0	3

Data assessment instructions for ECC6 on Oracle or DB02

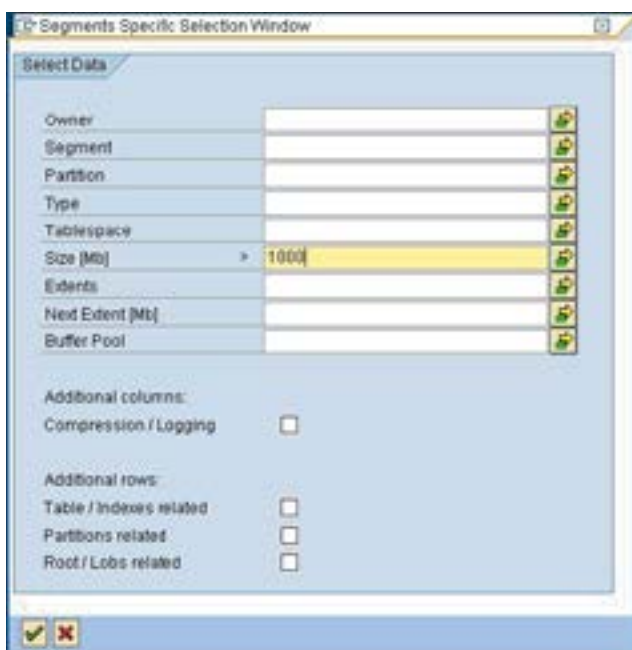


In the Size (Mb) field select the arrow at the right of the field and select greater than >.

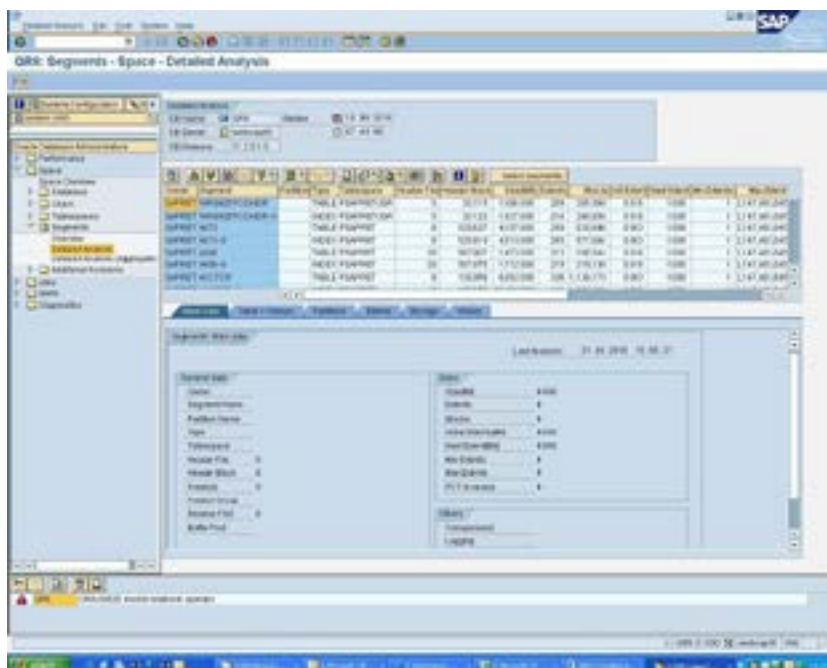
Enter say 1000 (=1 GB) into the size box. Press green tick.



Data assessment instructions for ECC6 on Oracle or DB02

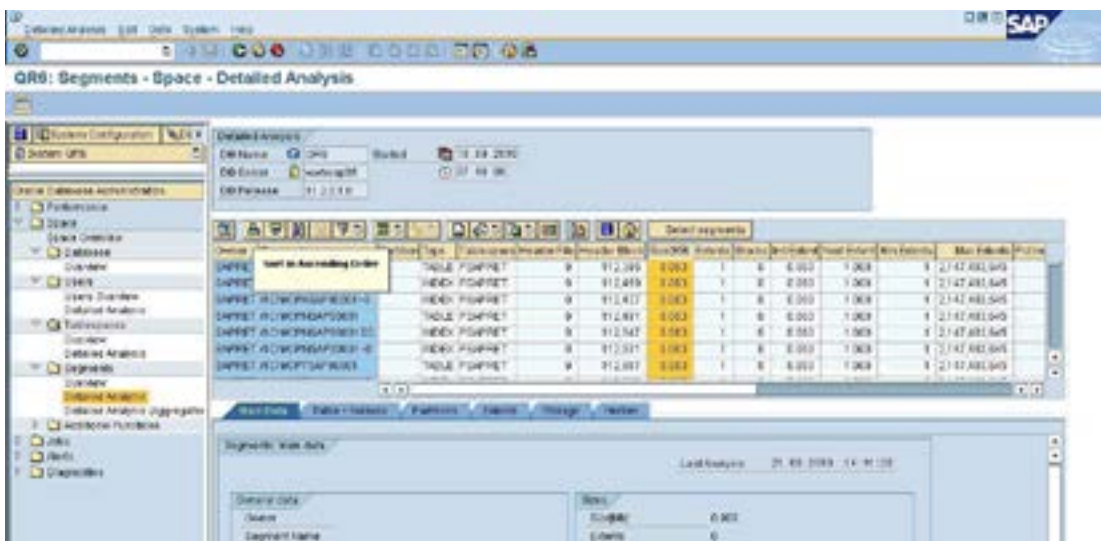


The following screen is displayed.

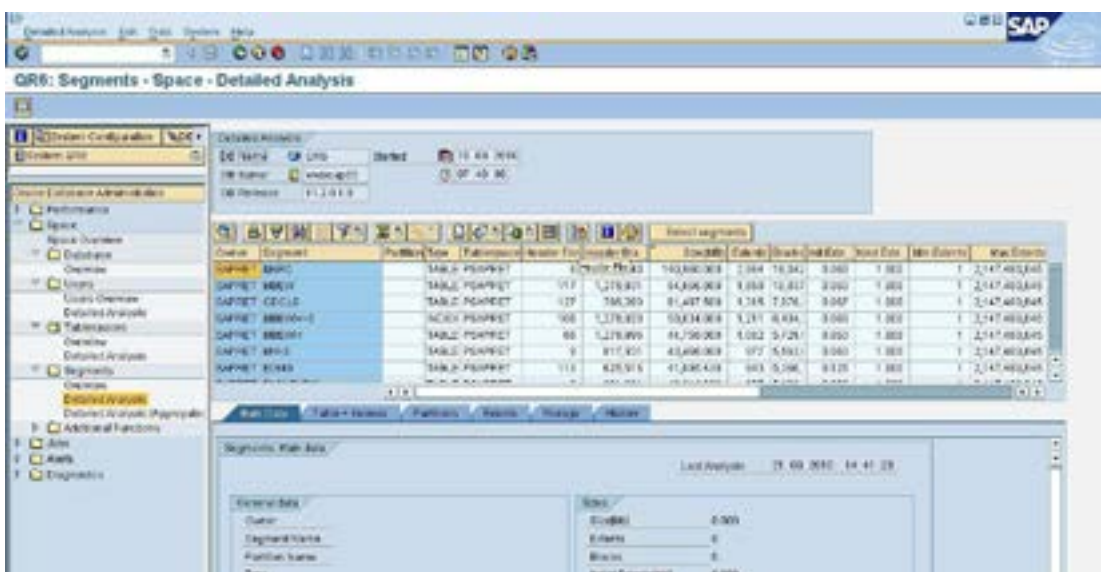


Now sort the table into descending order by positioning on the header of the Size (MB) column and press the sort icon.

Data assessment instructions for ECC6 on Oracle or DB02

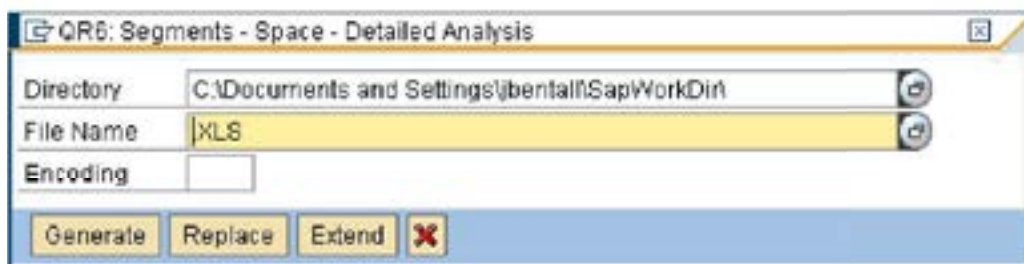


The following – sorted - screen will be displayed.



Save the report into a local file - spreadsheet.

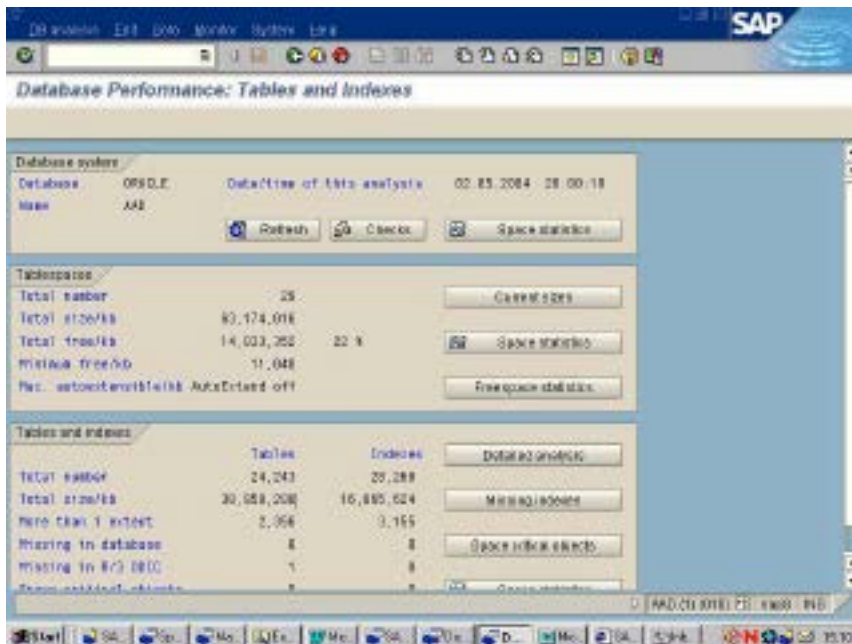
Data assessment instructions for ECC6 on Oracle or DB02



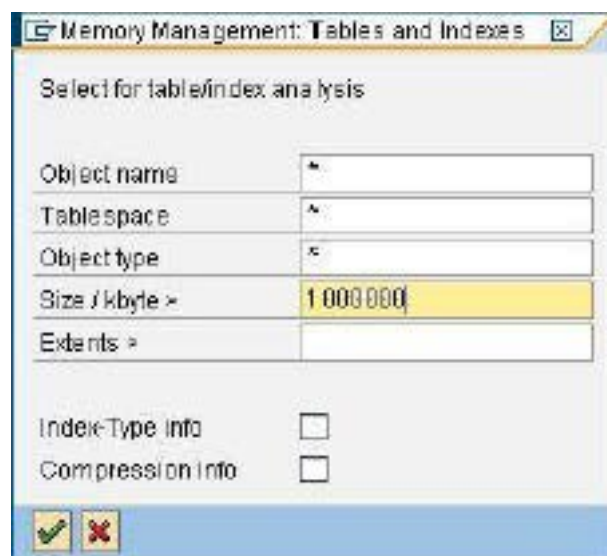
Give the file a name within this directory and press Transfer. This should create a spreadsheet.

Data assessment instructions for systems at a lower level than ECC6 on Oracle or DB02

Access transaction DB02 or use SE38/program RSORA060.



In transaction DB02 select Detailed Analysis.



Enter say 1000000 (=1Gb) into the size box. Press green tick.

Data assessment instructions for systems at a lower level than ECC6 on Oracle or DB02

Name	Object	Type	Tablespace	Kbytes	Blocks	Extents	Row
SYS	DB02	TABLE	SYSTEM	4,076	502	41	
SYS	COND	TABLE	SYSTEM	11,456	1,432	15	
SYS	VIEW0	TABLE	SYSTEM	4,276	527	35	
SYS	SOURCE0	TABLE	SYSTEM	16,476	2,252	83	
SYS	SIST_HELP0	TABLE	SYSTEM	25,056	3,207	17	
SAP02	TRFC_INSTR_DP	TABLE	PSAPSTAB0	26,082	32,324	38	
SAP02	N0100	TABLE	PSAPSTAB0	1,384,386	168,525	3	
SAP02	NRAP000	TABLE	PSAPSTAB0	5,176	542	1	
SAP02	N0CP	TABLE	PSAPSTAB0	10,264	1,283	2	
SAP02	N0CZ	TABLE	PSAPSTAB0	10,256	1,282	2	
SAP02	N0C3	TABLE	PSAPSTAB0	10,256	1,282	2	
SAP02	N0C5	TABLE	PSAPSTAB0	10,256	1,282	2	
SAP02	N0C7	TABLE	PSAPSTAB0	10,256	1,282	2	
SAP02	N0C8	TABLE	PSAPSTAB0	10,264	1,283	2	
SAP02	N0C9C	TABLE	PSAPSTAB0	10,256	1,282	2	

The following screen is displayed.

Name	Object	Type	Tablespace	Kbytes	Blocks	Extents	Row
SAP02	N0100	TABLE	PSAPSTAB0	1,384,386	168,525	3	
SAP02	N0C9C	TABLE	PSAPSTAB0	1,384,386	168,525	3	
SAP02	N0C3	TABLE	PSAPSTAB0	1,384,386	168,525	3	
SAP02	N0C5	TABLE	PSAPSTAB0	1,384,386	168,525	3	
SAP02	N0C7	TABLE	PSAPSTAB0	1,384,386	168,525	3	
SAP02	N0C8	TABLE	PSAPSTAB0	1,384,386	168,525	3	
SAP02	N0CZ	TABLE	PSAPSTAB0	1,384,386	168,525	3	
SAP02	N0CP	TABLE	PSAPSTAB0	5,176	542	1	
SAP02	N0C0	TABLE	PSAPSTAB0	4,076	502	41	
SAP02	COND	TABLE	SYSTEM	11,456	1,432	15	
SAP02	VIEW0	TABLE	SYSTEM	4,276	527	35	
SAP02	SOURCE0	TABLE	SYSTEM	16,476	2,252	83	
SAP02	SIST_HELP0	TABLE	SYSTEM	25,056	3,207	17	
SAP02	TRFC_INSTR_DP	TABLE	PSAPSTAB0	26,082	32,324	38	

Now sort the table into descending order by positioning on the first value in the Kbytes column and press the sort icon.

Data assessment instructions for systems at a lower level than ECC6 on Oracle or DB02

The following – sorted – screen will be displayed.

Database analysis - Goto Monitor System Help

SAP

Tables and Indexes: Analysis

Table -> Indexes Extents Table columns Detailed analysis History Sort

03.10.2008 06:13:32 SKI farame

BRTEXT

Data from DBA_SEGMENTS:
(unlimited = 1-)

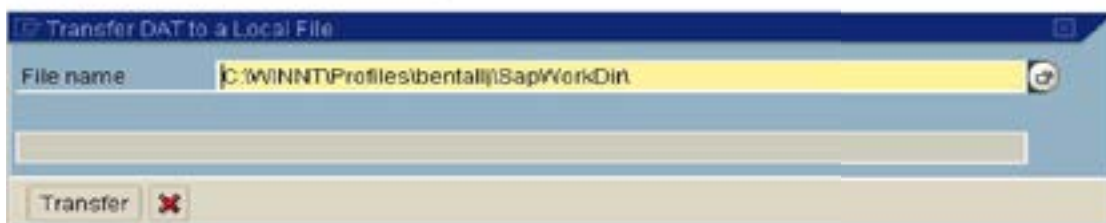
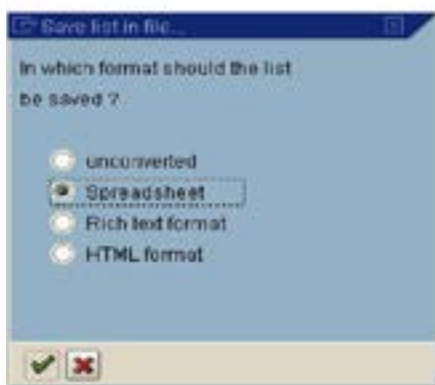
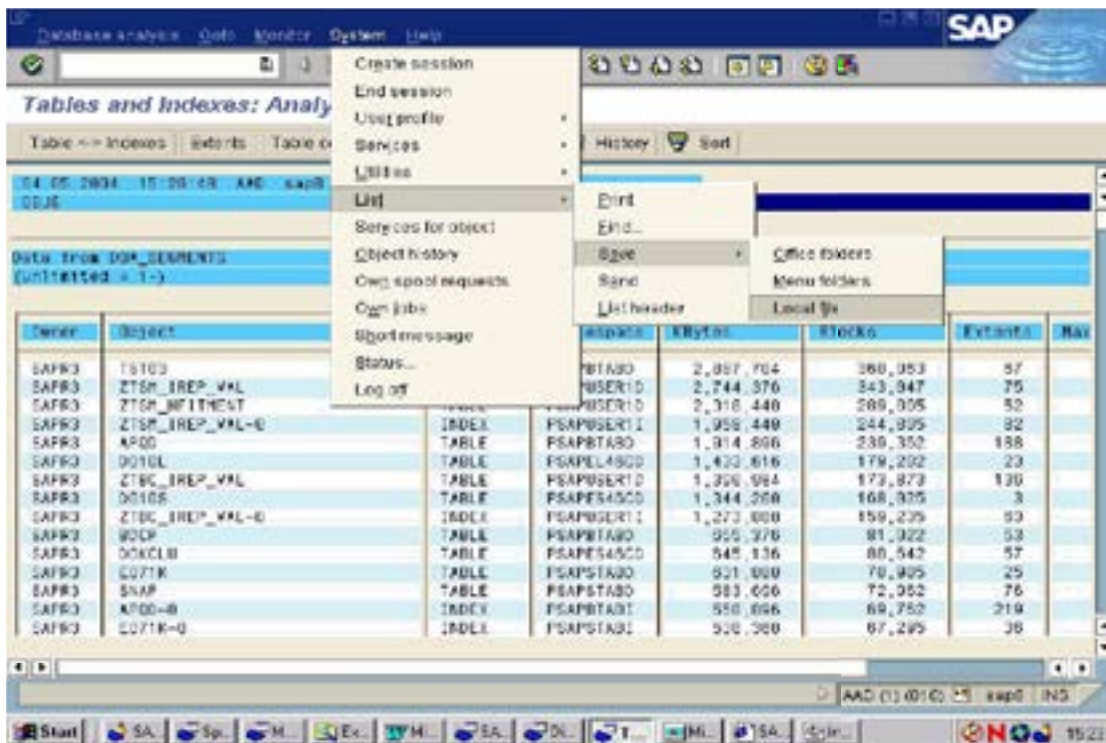
Owner	Object	Type	Tablespace	Kilobytes	Blocks	Extents	MaxExtents	Next (K)
SAPSKI	PCL2	TABLE	PSAPSKI	3,891,776	361,473	143	1-	0
SAPSKI	GLFUNCA	TABLE	PSAPSKI	2,620,832	326,704	139	1-	0
SAPSKI	DDKCLF	TABLE	PSAPSKI@20	1,636,400	204,800	288	1-	0
SAPSKI	SYS_L080000003091C8003488	LOBSEGMENT	PSAPSKI@20	1,186,816	146,352	202	1-	0
SAPSKI	RSPORC	TABLE	PSAPSKI@20	1,182,720	147,840	117	1-	0
SAPSKI	E071K	TABLE	PSAPSKI@20	975,872	121,984	162	1-	0
SAPSKI	AGR_HCERT	TABLE	PSAPSKI	964,608	126,576	161	1-	0
SAPSKI	ARFCSDATA	TABLE	PSAPSKI	851,968	106,496	175	1-	0
SAPSKI	SOC3	TABLE	PSAPSKI	796,432	96,304	139	1-	0
SAPSKI	REPOTEXT	TABLE	PSAPSKI@20	771,072	96,384	137	1-	0
SAPSKI	RSPTEXTS	TABLE	PSAPSKI@20	764,880	94,336	135	1-	0
SAPSKI	AGR_HCERT-0	INDEX	PSAPSKI	737,280	92,160	161	1-	0
SAPSKI	D010TAB-1	INDEX	PSAPSKI@20	712,704	86,000	150	1-	0
SAPSKI	D010TAB-0	INDEX	PSAPSKI@20	696,320	87,040	156	1-	0
SAPSKI	PCL4	TABLE	PSAPSKI	670,936	84,000	126	1-	0
SAPSKI	GLFUNCA-3	INDEX	PSAPSKI	656,456	82,432	152	1-	0
SAPSKI	INDTEXT	TABLE	PSAPSKI@20	620,016	77,952	119	1-	0
SAPSKI	D010TAB	TABLE	PSAPSKI@20	596,848	73,856	115	1-	0
SAPSKI	RSPTEXTS-0	INDEX	PSAPSKI@20	588,824	73,720	143	1-	0
SAPSKI	SYS_L080000002738C8001388	LOBSEGMENT	PSAPSKI@20	573,440	71,680	141	1-	0
SAPSKI	PP0IX	TABLE	PSAPSKI	543,744	67,900	110	1-	0
SAPSKI	E071K-0	INDEX	PSAPSKI@20	475,136	58,392	129	1-	0
SAPSKI	GLFUNCA-2	INDEX	PSAPSKI	467,968	56,496	129	1-	0
SAPSKI	GLFUNCA-1	INDEX	PSAPSKI	456,560	56,320	126	1-	0
SAPSKI	PTDM_PWS_DB	TABLE	PSAPSKI	443,392	55,424	87	1-	0
SAPSKI	E0140	TABLE	PSAPSKI	438,296	54,912	125	1-	0
SAPSKI	BRTEXT	TABLE	PSAPSKI@20	427,008	53,376	85	1-	0

SK1(1)(900) farame INS

start 2 SAP Log... 2 Microsoft... 3 Internet... 10 Mircos... C:\Data\WY... 08:16

Save the report into a spreadsheet.

Data assessment instructions for systems at a lower level than ECC6 on Oracle or DB02



Give the file a name within this directory and press Transfer.
This will create a spreadsheet

Data assessment instructions for all systems on SQL server

Start transaction DBO2_MSS (or DBO2).

Database Performance: Database Allocation

Connected to: P435AP02 | IDE | ide | CC | SF | I |

System: DB02 | Database: DB02 | Schema: /

Database:

DB size (MB)	208,200	AutoCreateStatistics: On	CR Detail Details
Size used (MB)	207,938	AutoUpdateStatistics: On	DBCC checkdb
Free (MB)	1,800	AutoUpdateStatistics async: On	DB space history
Log size (MB)	3,900	Recovery: FULL	Database backup
Log used (MB)	30		

Database files: Transaction log files

File name	DB size (MB)	Used (MB)	Limit	Growth	Physical file name	Free (MB)	File type
EDATA1	11,178	10,276	No limit	60,000	D:\CR\DATA\EDATA1.ndf	41,576	PRIMARY
EDATA2	11,258	10,000	No limit	60,000	D:\CR\DATA\EDATA2.ndf	41,576	PRIMARY
EDATA3	11,380	10,044	No limit	60,000	D:\CR\DATA\EDATA3.ndf	41,576	PRIMARY
EDLOG1	3,900	N/A	200,000	10%	D:\CR\LOG\EDLOG1.ldf	60,000	LOG

Objects:

Object type	Total number	Total size (MB)	Table size
Tables	72,679	186,404,400	N/A
Indexes	30,143	43,893,520	N/A
Stored Procedures	244	N/A	N/A
Active SQL Filter Trace	1	N/A	N/A

Buttons: Single table statistics, Space Statistics, DBCC checkdb, DBCC checktraces

Select Space Statistics

Space statistics

- Table size history
- Top n largest table**
- Top n growing tables
- Cancel

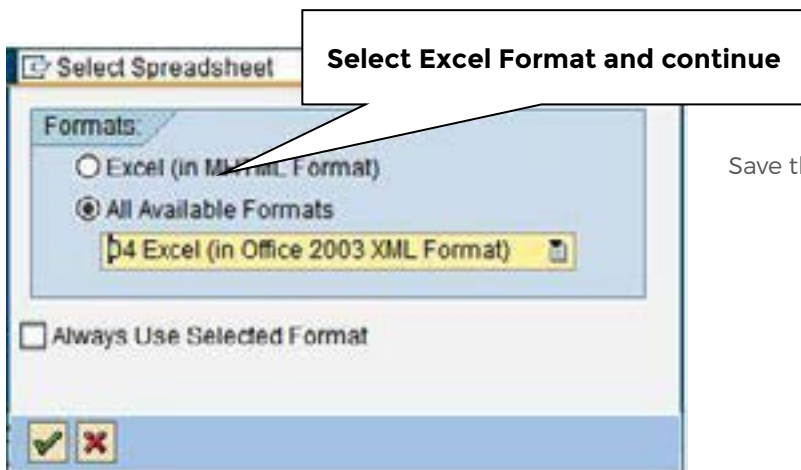
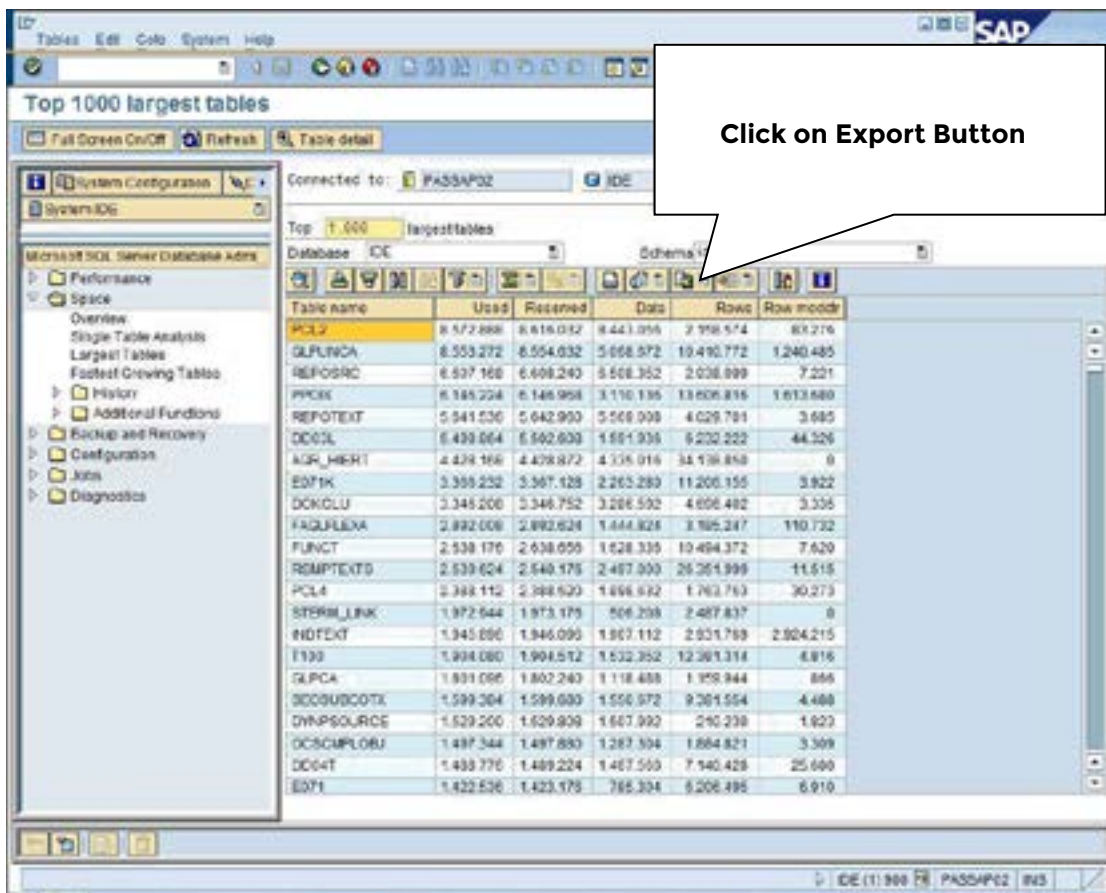
Click on Top N Largest Tables in the Pop-up Window

Data assessment instructions for all systems on SQL server

Change number of tables to 150
Press Enter

Table name	Used	Reserved	Data	Rows	Row modct
PCL2	8,572,888	8,610,032	8,443,056	2,158,574	83,276
GLFUNCA	8,553,272	8,554,632	5,068,672	10,410,772	1,240,485
RSPOSRC	6,607,168	6,608,240	6,508,362	2,928,899	7,291
PPDCX	6,146,224	6,146,968	3,110,136	13,606,816	1,613,640
REPOTEXT	5,641,536	5,642,960	5,569,088	4,029,701	3,685
DD03L	5,498,864	5,502,688	1,591,936	6,232,222	44,326
AGR_HIERT	4,426,168	4,426,872	4,335,016	34,138,850	0
E071K	3,366,232	3,367,128	2,263,280	11,206,155	3,922
DDKCLU	3,346,288	3,346,752	3,286,542	4,606,402	3,335
FAGLFLEXA	2,892,096	2,892,624	1,444,824	3,185,247	110,732
FUNCT	2,638,176	2,638,656	1,628,336	10,464,372	7,620
RS&PTEXTS	2,538,634	2,540,176	2,497,090	26,351,999	11,515
PCL4	2,308,112	2,308,520	1,898,632	1,763,753	36,273
STERM_LINK	1,972,944	1,973,176	506,298	2,487,837	0
INDTEXT	1,945,896	1,946,096	1,907,112	2,931,769	2,924,215
T100	1,904,080	1,904,512	1,532,352	12,361,314	4,816
GLPCA	1,801,088	1,802,240	1,116,488	1,159,344	895
SECURCOTX	1,598,384	1,598,880	1,550,672	9,381,554	4,488
DYNPDSOURCE	1,529,200	1,529,988	1,507,892	210,230	1,623
OCSCMFL0BJ	1,497,344	1,497,880	1,287,384	1,864,821	3,369
DD04T	1,488,776	1,489,224	1,467,580	7,140,428	25,680
E071	1,422,536	1,423,176	795,384	6,206,496	6,910

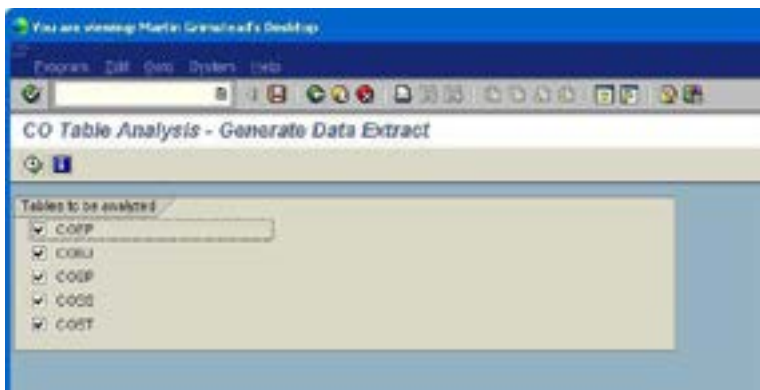
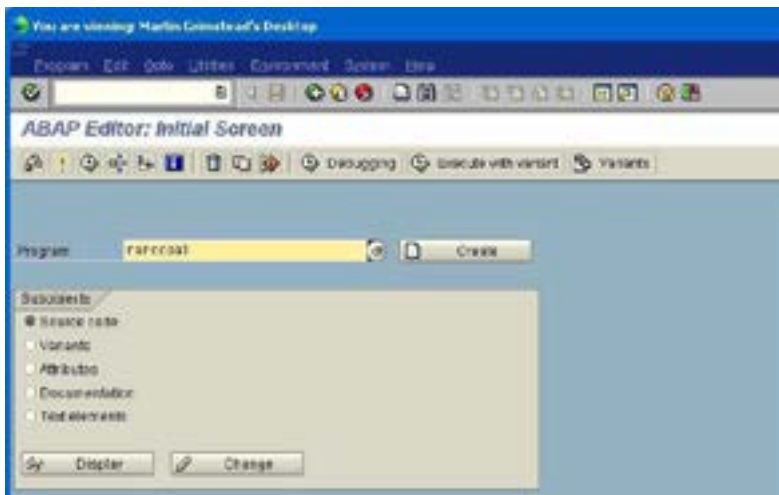
Data assessment instructions for all systems on SQL server



Save the file and send it to us.

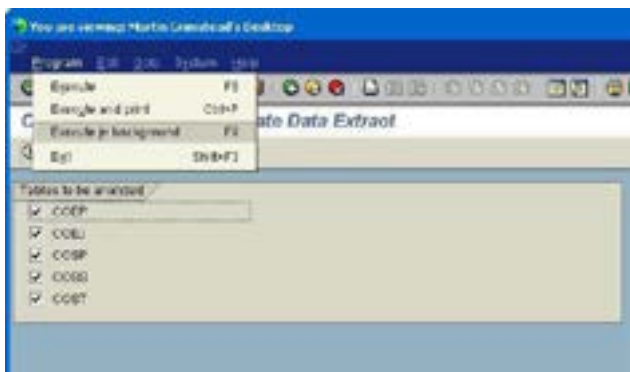
Analysis of the COEP table

For all users running DBO2 on their ERP instance please run the following transaction as well SE38 RARCCOAI



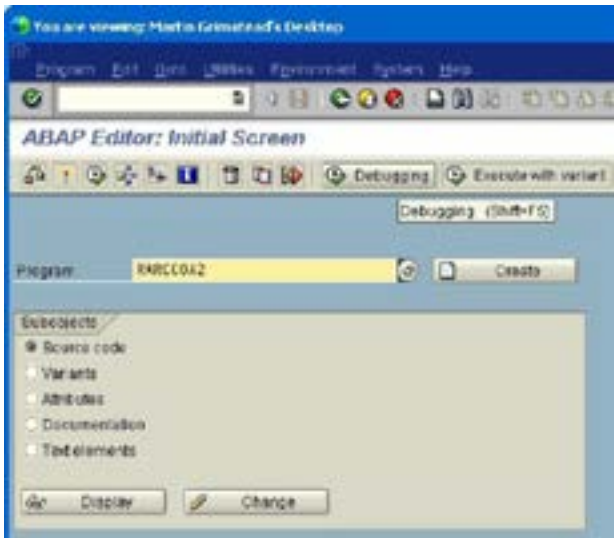
Tick All Boxes.

Execute in Background **Do NOT Print**

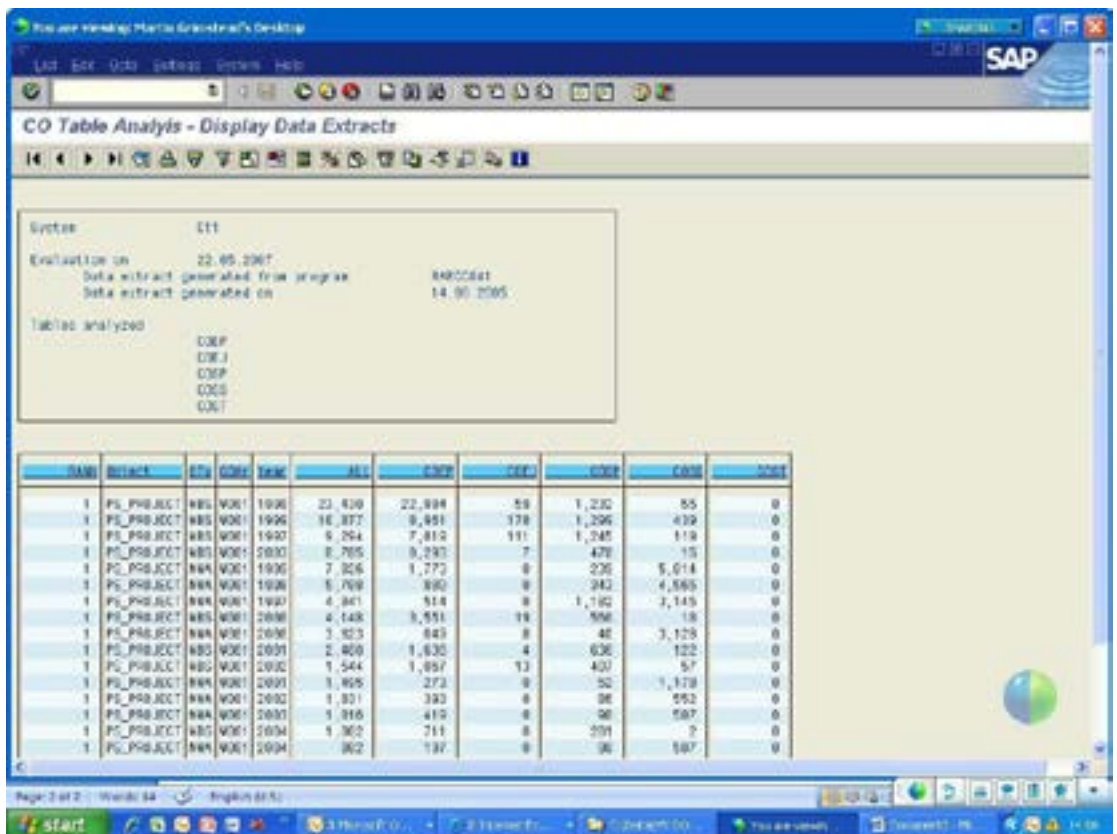


The above may take a while!

SE38 / RARCCO2



Output results and open out the summary lines using the he "+" boxes to give the year-by-year analysis shown here >>>



Follow the instruction for the DB02 in order to create a spreadsheet.

SYSTEM INFORMATION

(required in all instances)

Once your spreadsheets are ready please return them to: RightSizingSAP@proceedgroup.com

Please include the following important information:

- > What is the age of your SAP System?
- > What is your current version?
- > What database are you using?
- > What is your current version?
- > Have you used compression in Oracle or DB2?

CONTACT US

For further information on our RightSizing for SAP services please contact us.

Proceed Group Headquarters

Proceed Group Headquarters

Regus House

Fort Dunlop

Fort Parkway

Birmingham

B24 9FE

UK

T: +44 (0) 121 629 7830

F: +44 (0) 121 629 7701

E: info@proceedgroup.com

W: proceedgroup.com

