

Welcome to this Webinar

Please note:

- All attendees will be muted throughout the webinar
- To ask questions, please use Q&A tool
- Closing confirmation box will result in losing audio
- Attendees will not be able to view other attendees on this webinar

- **This webinar will be recorded**

Serrala

**Boosting Efficiency – Cash Application within SAP
powered by Machine Learning**

Your Serrala Team



Richard Hammons



**Senior Account
Executive**

+44 7788 564722

r.hammons@serrala.com

Garoid Pierse



**Solution Architect
for Cash Application**

+353 86 722 8470

g.pierse@serrala.com

Alastair Velzian



**Senior Account
Executive**

+44 7802 881797

a.velzian@serrala.com

Agenda



1. Introduction to Serrala
2. FS² AutoBank – Serrala’s Cash Application Solution
3. SmartEye – Machine Learning powered document capturing
4. Demo
5. Why Serrala?
6. Spring Forward – Special Offer
7. Q & A

Before we start – a few words about Serrala

Who we are...



600+

People focusing on O2C, P2P, Payments, Cash/Treasury as well as Data/Document Management



3,500+

Customers globally, either SAP, SAP-integrated, Multi-ERP, on-premise, in the cloud or as managed service



1

Company



Recently rebranded from Hanse Orga Group and its subsidiaries (e.g., Dolphin, e5 Solutions, cogon, tembit, Soplex)

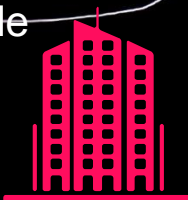
30+

Years of experience



18

Offices worldwide (Europe, North America, Asia, Middle East)



Award winning software



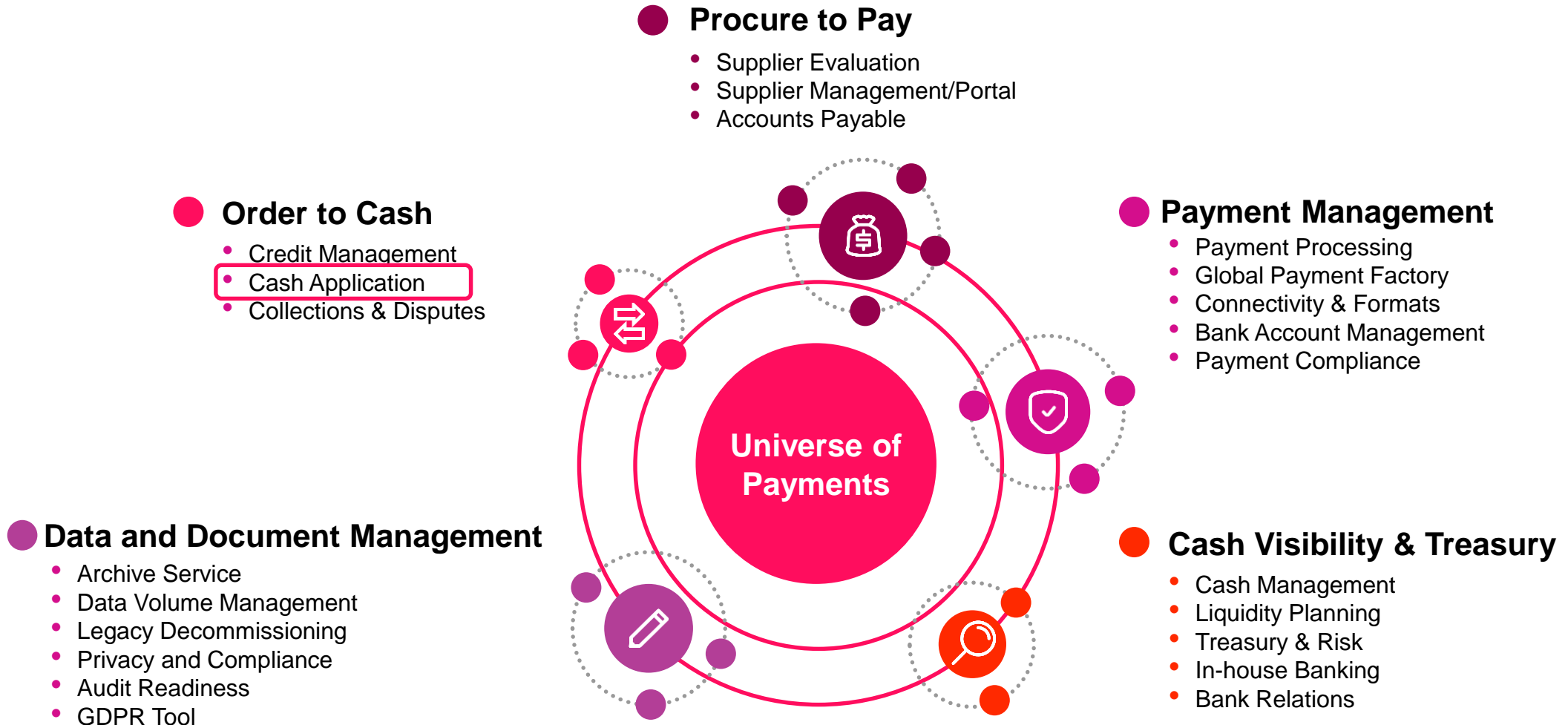
TMI - Treasury Management International awards **January 2019** Technology & Innovation Awards Winners three categories:

1. Best Accounts Payable (FS² Accounts Payable)
2. Best Accounts Receivable (FS² AutoBank)
3. Best project for working capital – awarded to ABB (FS² AutoBank)



ABB's Group Vice President Accounting, Neil Murdey (centre), poses with the Highly Commended Corporate Recognition award for Working Capital alongside project partners Serrala who were represented by Kevin Grant. Serrala also won 2 TMI awards: Best Accounts Payable Solution and Best Accounts Receivable Solution.

From Order-to-Cash, Procure-to-Pay, to Cash Visibility and Beyond...



FS² – Integration with SAP

Written in ABAP as an SAP “Add-In”



- Highest possible integration in SAP
- No SAP standard modifications needed
- FS² software solutions are like an additional SAP module
- Serrala’s own namespace
- SAP authorization of users and segregation of duties
- Full audit trails in SAP
- One version of the truth inside SAP
- FS² Software is tried and tested and used by many
- Leveraging your investment in SAP
- Compatible from ECC 6.0 to S4/HANA



Certificate
SAP INTEGRATION CERTIFICATION

SAP SE hereby confirms that the ABAP interface software for the product

FS² 6.2.2

of the company

Serrala Group GmbH

has been certified for integration with SAP S/4HANA 1709 via the SAP integration scenario ABAP Add-On Deployment for SAP S/4HANA.

This certificate confirms the technical and syntactical consistency of the Add-On in accordance with SAP certification procedures.

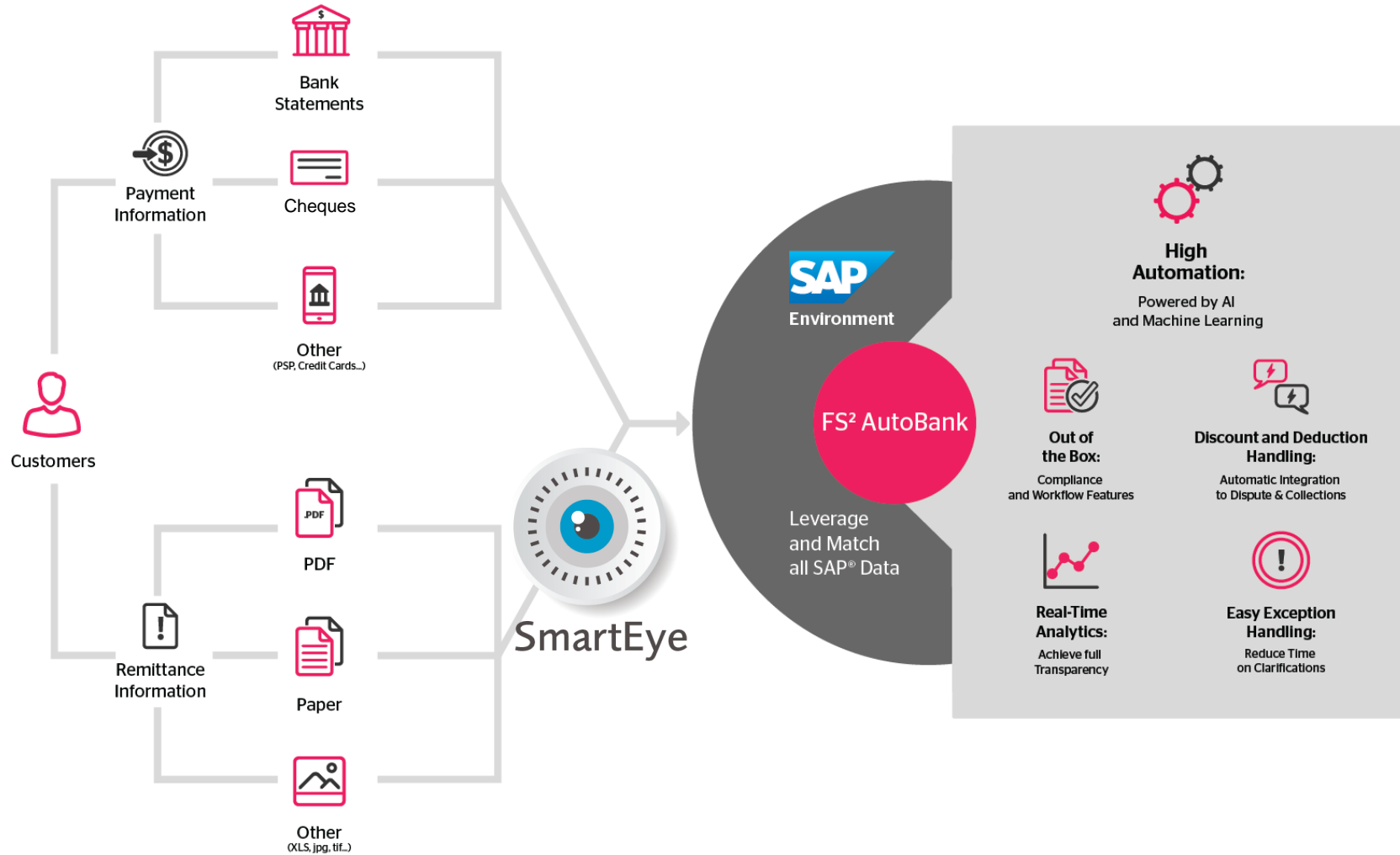




The Cash Application process with Serrala

Cash Application

The Cash Application Process with Serrala





SmartEye – Document Capture

It's not the same old OCR anymore....

The new SmartEye

Serrala's intelligent capturing solution



The new SmartEye:

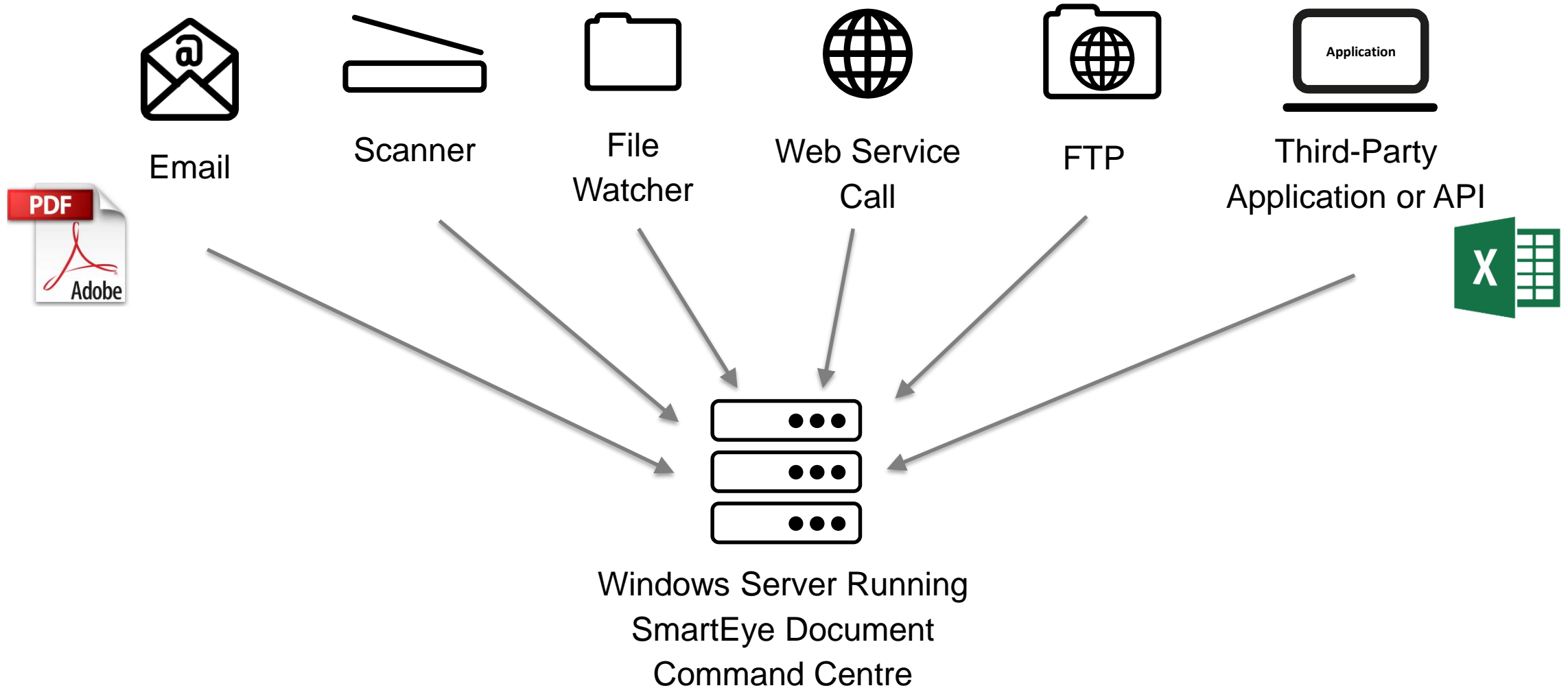
- The new SmartEye is Serrala's harmonised capturing solution for all incoming documents (used for all FS² and Alevate products)
- Full in-house development of Serrala with the latest technologies (machine learning, creation and usage of digital fingerprints for documents)
- Perfect symbiosis of SmartEye and FS² AutoBank / FS² AccountsPayable
- Optimized for use in the cloud

Benefits for our customers:

- Everything from a single source with only one contact (no use of third-party providers)
- Active product management and product development by Serrala and therefore constant increase in use for our customers
- Using SmartEye in the Cloud: customers no longer need their own on-prem SmartEye server

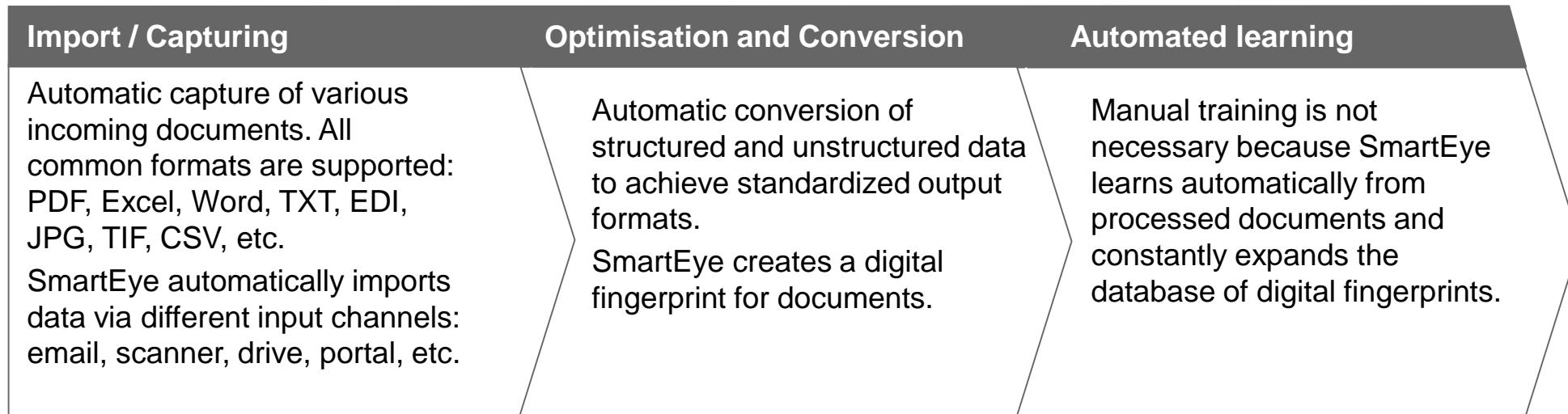


Document Input Capabilities



The new SmartEye

End-to-End process with SmartEye



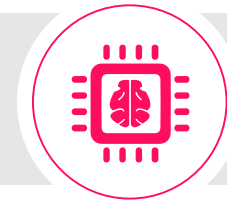
SmartEye



Automatic import of data (structured and unstructured)



Automated format conversion via digital fingerprint



Machine Learning

Benefits of SmartEye



- ✓ **Comprehensive** – handles all document types
- ✓ **Machine learning and AI** learns automatically
- ✓ **Flexible** deployment options- SmartEye Cloud or on-premise
- ✓ **Intelligent** character recognition – more than OCR
- ✓ **Language agnostic** great for Arabic, Thai, Chinese, Hebrew..
- ✓ **OCR's** paper documents
- ✓ **Source identified** using digital fingerprints



100%
Accurate
Data Capture

The Demonstration

Live Demo

Why Serrala?

Serrala FS² AutoBank



Only Serrala can deliver all these benefits

- ✓ **Inside SAP on premise**
- ✓ Ready for **S/4 HANA** and can be used with earlier versions
- ✓ Uses the rich data in **remittance advices**
- ✓ Import and interpret **PSP and Card Acquirer** files
- ✓ Advanced **Lockbox processing**
- ✓ **Intraday processing** for high volume situations
- ✓ **SmartEye** digital document capture with AI and ML
- ✓ **Accurate posting** – AutoBank only posts on a certain match
 - ✓ Avoiding very time consuming reversals
- ✓ **Powerful Post-Processing** for exceptions
- ✓ Key users can **draw up rules in live system** much faster than working through IT
- ✓ **34 years** of continual development, many **Global** implementations
- ✓ Largely **fixed price licensing** model with volume bands for remittances
- ✓ Powerful **analytics** and reporting
- ✓ **Fiori apps** in ECC6.0 not need to wait until S/4
- ✓ Part of a **comprehensive O2C solution**



Spring Forward – Special Offer

Analysis Workshop



What's involved?

- On-site business analysis of your current processes
- Description of current processes
- Data volumes and quality
- Technical environment
- Time effort, results and risks results of current processes
- Description of recommended solution scenario
- Benefits with our solution
- Implementation budget, resources needed on both sides
- Rough time tables
- Implementation methodology

SPRING FORWARD – UKISUG SPECIAL OFFER
Usually £4,000

For workshops arranged before the end of May 2019
FREE Workshop - cover travel costs only

Delivered through...

- Questionnaire
- 2 days on-site analysis
- Documentation
- Management presentation
- Reliable findings and results

“The best way to fully understand how the application of Serrala’s Solutions can help my organisation”

“The Analysis Workshop helped me to get internal sign off from my management”

“The workshop helped us to get the project moving”

Q & A



SERRALA

Bringing Clarity to Complexity